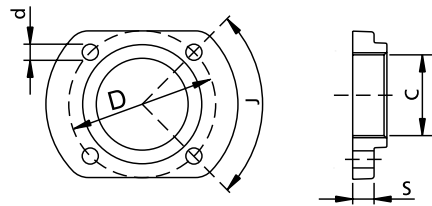


4.5 Flanges and chains

KFL Flange

General characteristics

Flange in GJL-250 cast iron painted with epoxy coating



Cast iron flange to transform the delivery port from GAS 1 1/2" to GAS 2". Designed to be coupled to electric pumps with DN32 PN6 outlet flange.

All product images are indicative only

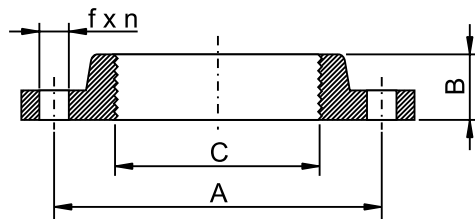
	C	d	D	J	S	kg
KFL 32/G50	G 2"	M12	90	90°	15	0.75

All weights and dimensions are indicative only

Dimensions in mm

General characteristics

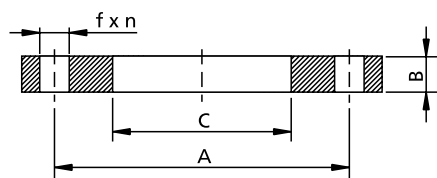
Threaded and welded flanges PN6 and PN 10-16 in accordance with standard EN 1092-1



	A	B	C	f	n	kg
KFL / G50 PN10-16	125	30	2"	18	4	2.8
KFL / G65 PN10-16	145	30	2 1/2"	18	4	3.5
KFL / G80 PN10-16	160	35	3"	18	8	4.2
KFL / G100 PN10-16	180	40	4"	18	8	4.9

All weights and dimensions are indicative only

Dimensions in mm



	A	B	C	f	n	kg
KFL / 150 PN10-16	240	25	168	22	8	7.6
KFL / 200 PN10	295	25	216	22	8	10.0
KFL / 250 PN10	350	30	267	22	12	13.4
KFL / 300 PN10	400	30	318	22	12	14.8

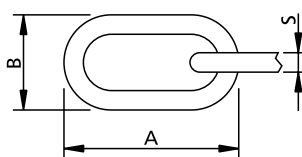
All weights and dimensions are indicative only

Dimensions in mm

KAT Chains

General characteristics

Stainless steel or galvanized steel chains.
Suitable for moving pumps from tanks and wells.



All weights and dimensions are indicative only

Dimensions in mm

material	dimensions			weight (gr/m)	max load (*) (kg)
	D	d	s		
AISI 316	33	19.5	5	482	325
AISI 316	51	30.5	8	1250	700
Fe 430	51	30.5	8	1205	650
Fe 430	71.5	44.5	12	2895	1500

(*) Uncertified approximate loads